

3 BEDROOM MAISONNETTES WITH PRIVATE GARDEN

EAST & WEST / 1st Floor



GRAMERCY

1860

3 Bedroom
2.5 Baths

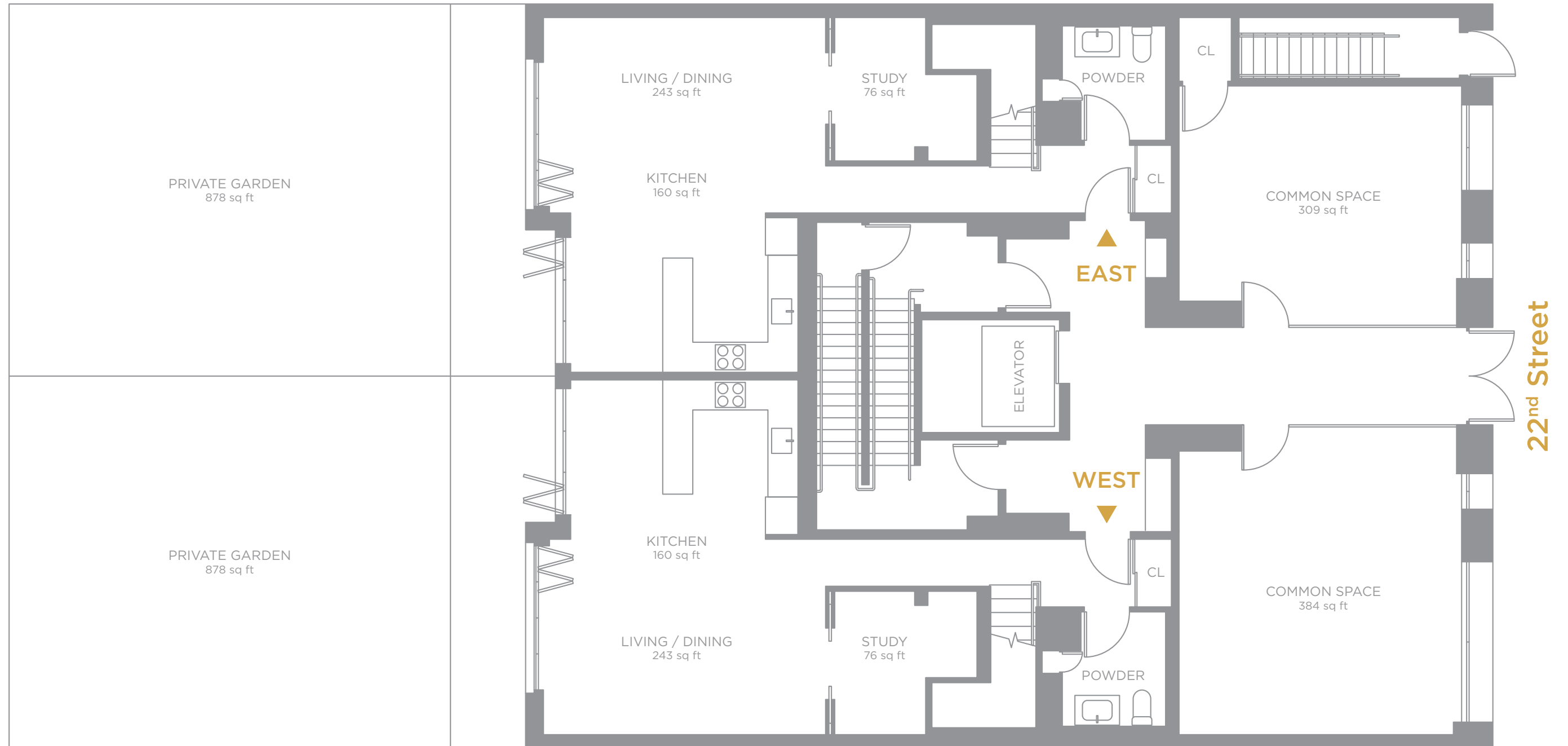
Interior: 2,043 sq ft
Private Garden: 878 sq ft

Cellar Storage:
East: 534 sq ft
West: 288 sq ft

gramercy1860.com
+1.646.780.8129

Edward Hickey
edward@compass.com

Kelly Wang
kelly@compass.com



DEVELOPED BY:



MARKETING BY:



COMPASS



This advertisement is not an offering. It is a solicitation of interest in the advertised Units. No offering of the advertised Units may be made, no deposits may be accepted and no reservations, binding or non-binding, may be made until an offering plan is accepted for filing by the New York State Department of Law. This advertisement is made pursuant to Cooperative Policy Statement No. 1, File No. CP18-0103. Sponsor: Gramercy 1860 LLC, c/o Suzuki Capital, LLC, 122 East 42nd Street, New York, New York 10168 / SC Property Development, LLC has not measured the subject property and makes no representation of any of the measurements provided. The measurements are estimates and should not be relied upon. If exact measurements are a concern, the property should be independently measured by a professional.

3 BEDROOM MAISONNETTES WITH PRIVATE GARDEN

EAST & WEST / 2nd Floor



GRAMERCY

1860

3 Bedroom
2.5 Baths

Interior: 2,043 sq ft
Private Garden:
878 sq ft

Cellar Storage:
East: 534 sq ft
West: 288 sq ft

gramercy1860.com
+1.646.780.8129

Edward Hickey
edward@compass.com

Kelly Wang
kelly@compass.com



22nd Street

DEVELOPED BY: **SC**
Property Development LLC

MARKETING BY: **THE EDWARD HICKEY TEAM**

COMPASS



This advertisement is not an offering. It is a solicitation of interest in the advertised Units. No offering of the advertised Units may be made, no deposits may be accepted and no reservations, binding or non-binding, may be made until an offering plan is accepted for filing by the New York State Department of Law. This advertisement is made pursuant to Cooperative Policy Statement No. 1, File No. CP18-0103. Sponsor: Gramercy 1860 LLC, c/o Suzuki Capital, LLC, 122 East 42nd Street, New York, New York 10168 / SC Property Development, LLC has not measured the subject property and makes no representation of any of the measurements provided. The measurements are estimates and should not be relied upon. If exact measurements are a concern, the property should be independently measured by a professional.